



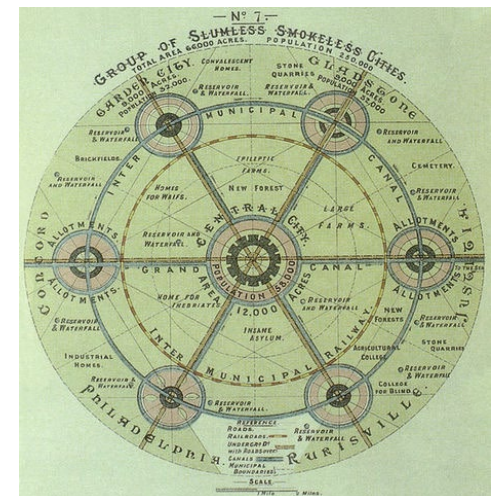
CSW:
**Cakra
Selaras
Wahana**
Jakarta, Indonesia

PT Rekatama Konstruksindo



Public Transport Stop Map by Satya Nugraha
Transit Points by ITDP Indonesia

A colorful, abstract map of a city grid. The map features a variety of colored blocks: red, orange, green, blue, and brown. A large green area in the upper left is labeled 'K'. A large green area in the lower left is labeled 'C'. A red block in the lower right is labeled 'M'. The map is composed of many small, irregular shapes representing buildings and streets, with some areas having a textured or patterned appearance. The overall style is reminiscent of a stylized, colorful map or a piece of art.





1948



2002-2014



2017

CSW (Centrale Stichting Wederopbouw) intersection is located in Kebayoran Baru. Because of the massive development during the last decade, the historic intersection was losing its identity. Inspired by the concept of the ASEAN Secretariat building and the original city plan of Kebayoran Baru, the design reintroduces 'CSW' as "Cakra Selaras Wahana." "Cakra" – a circular shape pedestrian bridge (represents the 'lost' roundabout in the historical city plan); "Selaras" – harmonious with the surrounding; and "Wahana" – transit space for connecting the BRT and MRT users.



Some existing problems (2016-2019) in the CSW intersection: disintegrated & non-human centered public facilities. This interchange is passed by BRT (Transjakarta) corridor XIII (west-east flyover busway) and a year old MRT (north-south railway). However, the existing CSW Transjakarta bus shelter, which is located at a 23 meters height, only has stair access and no direct connection with the ASEAN MRT station located less than 100 meters north.

Participation Process



SAYEMBARA
DESAIN PRASARANA INTEGRASI
HALTE TRANSJAKARTA DAN STASIUN MRT
DI SIMPANG CSW (Centrale Stichting Wederopbouw)

**Total Hadiah
Rp 220 Juta**



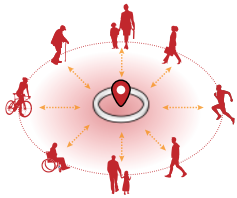
info : www.transjakarta.co.id
pendaftaran : sayembara.csw@transjakarta.co.id
contact person : Yusuf 08181-56172

Pendaftaran mulai 1-8 Feb 2019, batas pemasukan karya 8 Maret 2019



In 2019, a public competition was held by the DKI Jakarta Government and PT Transportasi Jakarta. The following were the goals of the competition: to connect the movement of MRT and BRT (TransJakarta) users (to integrate), to harmonize the design with the existing situation, to create commercial area which will add to non-fare-box income for PT Transportasi Jakarta.

Macro Design Principles



Human-Centered Design

Putting people first: pedestrians & the users of public transportation rather than motorized vehicles.



Intermodal Network

Prioritizing good and user-friendly accessibility to transit and switching modes of transportation.



Green Network

Regenerate the concept of 'Garden City' Kebayoran Baru historical city plan.



Socioeconomic Network

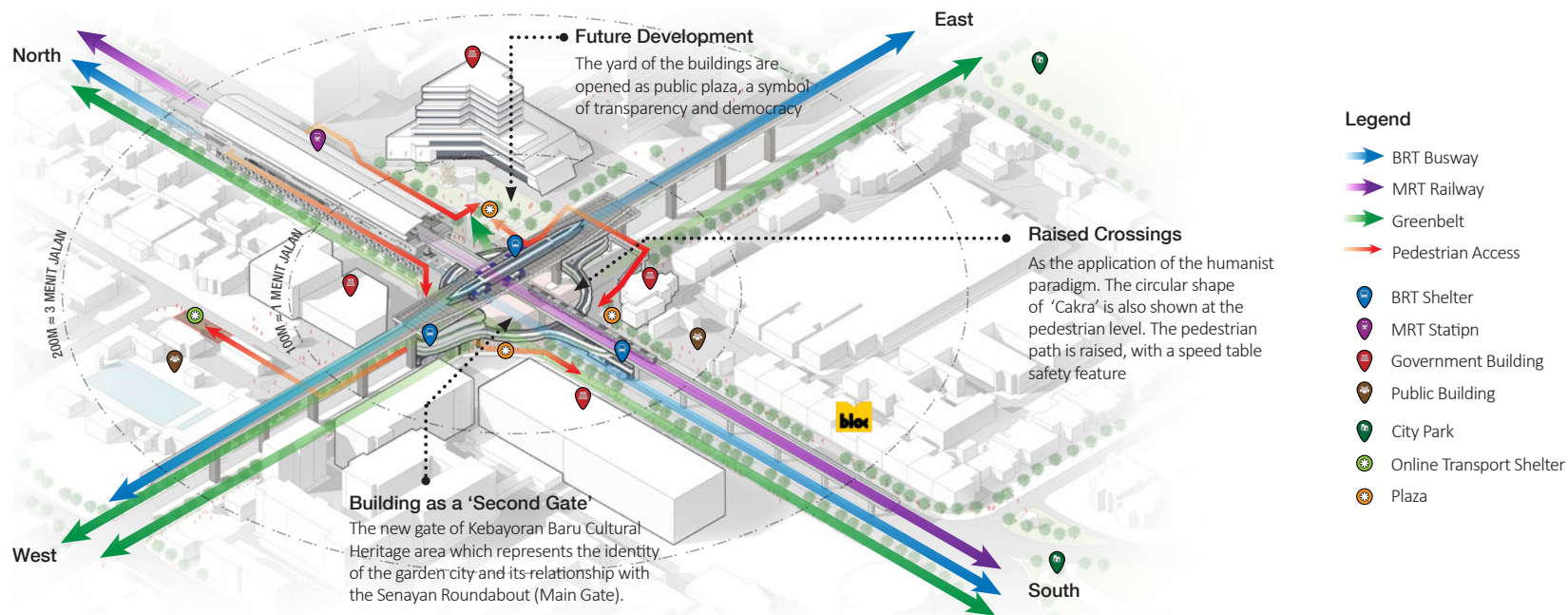
Forming a CSW area that functions as a terrace for Jakarta citizens to interact & boosting the economy.



Reconnect the Past, Reinvent the Future

Respect the historical context and reconsider the possible future development.

Macro Design Framework



Massing Concept

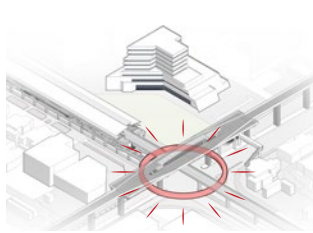
ASEAN (Association of Southeast Asian Nations) Secretariat is located facing CSW Intersection. It is designed by Soejoedi (Indonesia's modern architecture pioneer) in the previous half century. Soejoedi responded to the CSW roundabout, created an 'L'-letter-shaped building.



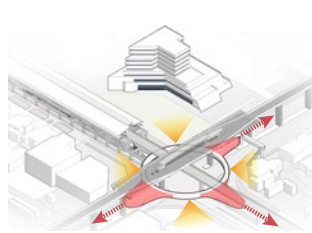
Massing Concept



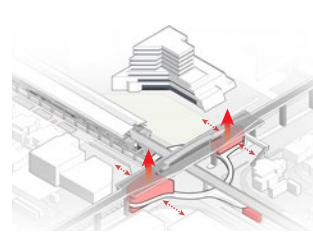
1
The CSW Roundabout was then responded by the design of the ASEAN Secretariat building, which is now one of Indonesia's Modern Architecture Heritage Buildings. The missing roundabout means **the lost of identity**.



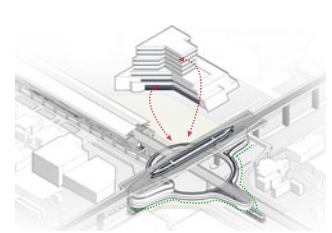
2
Represent the 'CSW Roundabout' a **symbol of unity** that refines the existing massive infrastructure.



3
The circular-shaped mass is **pulled in three directions** to connect and provide function. The mass provides a new perspective for the surroundings.

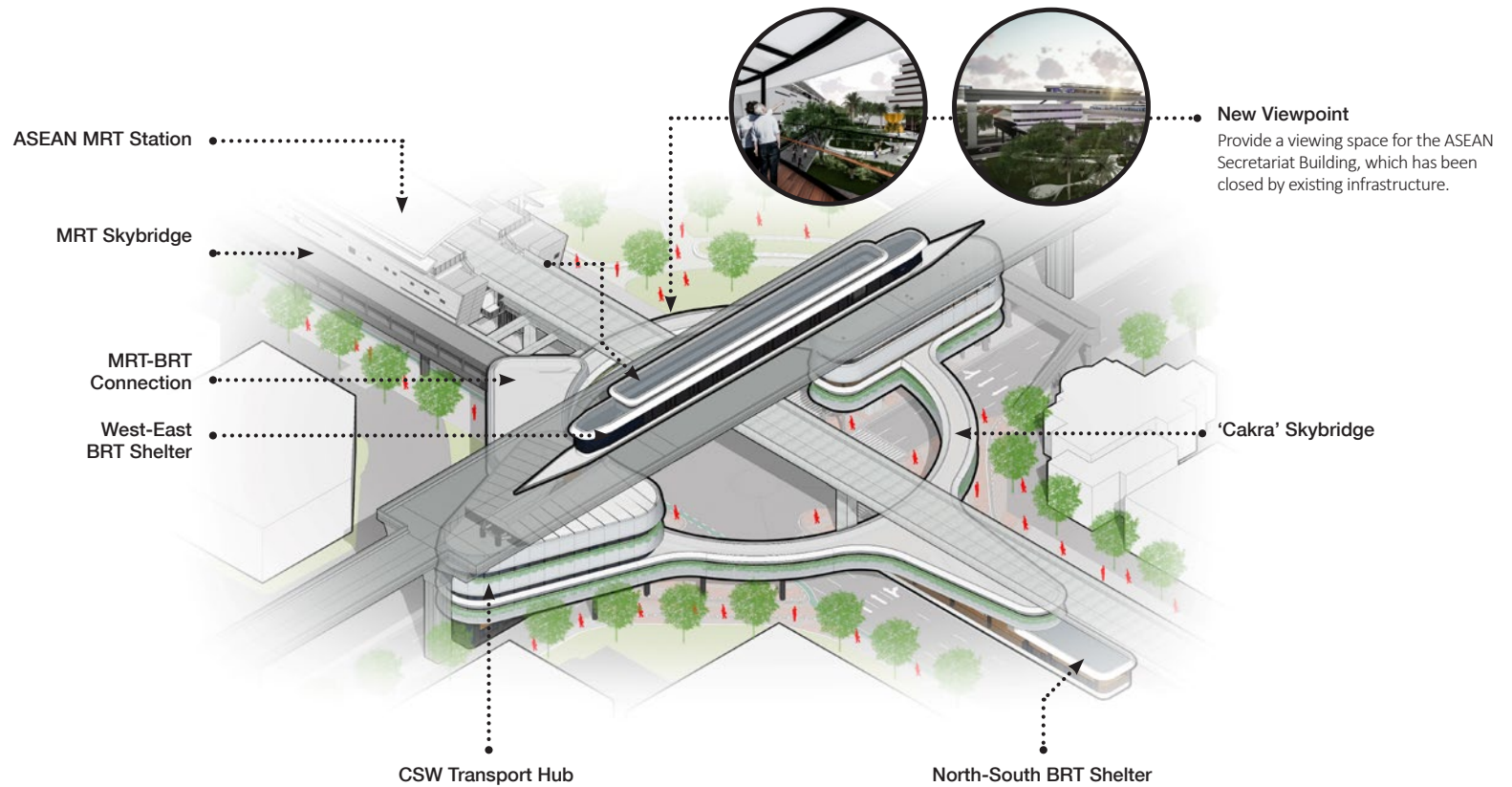


4
The mass then **vertically connecting** the elevated busway with the road below. The mass width is spaced sufficiently, to respect the surroundings.

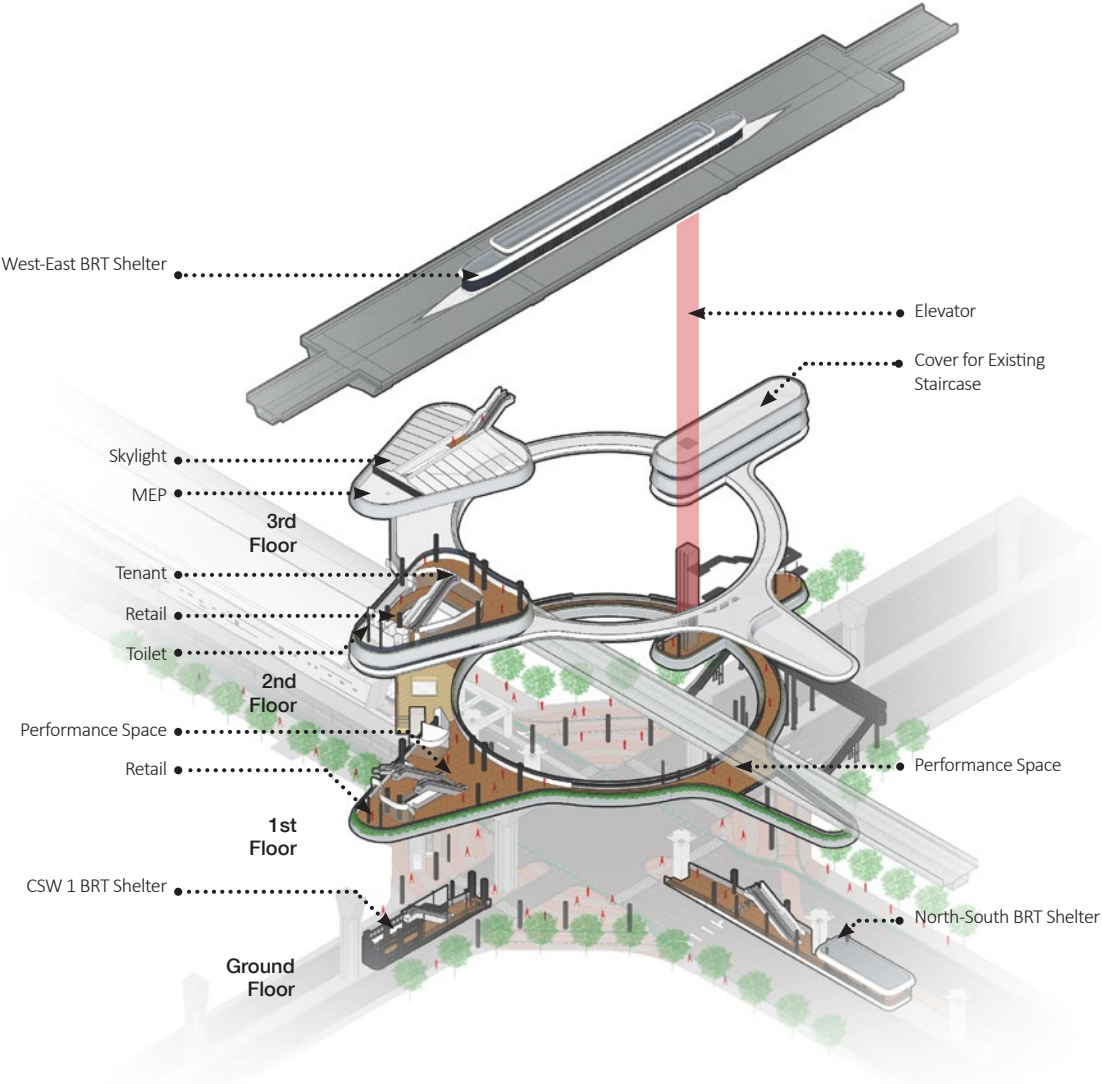


5
Respecting the Cultural Heritage: The facade is inspired by the 'floating' design concept of ASEAN building.

Micro Concept

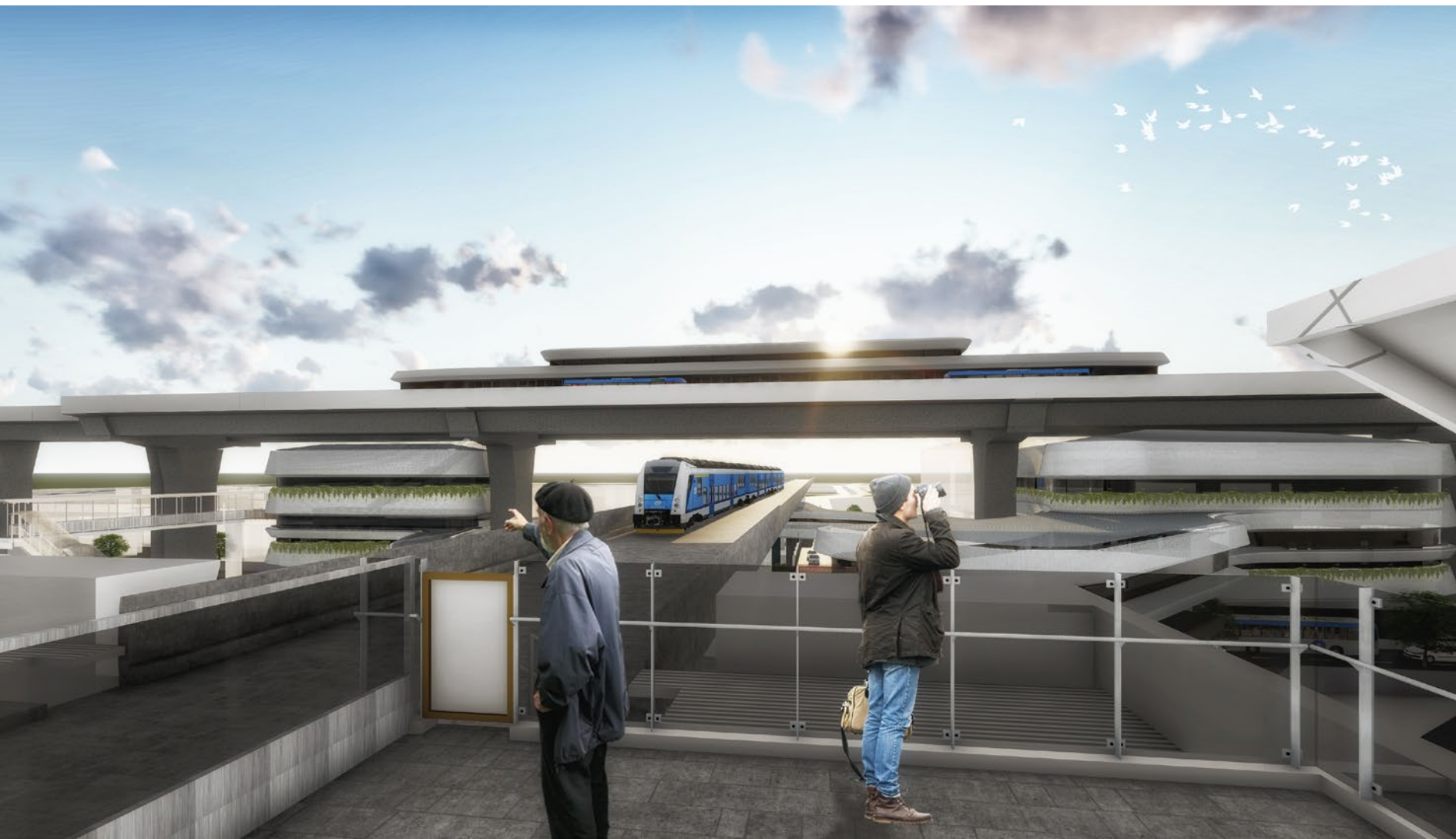


Micro Concept





Renderings

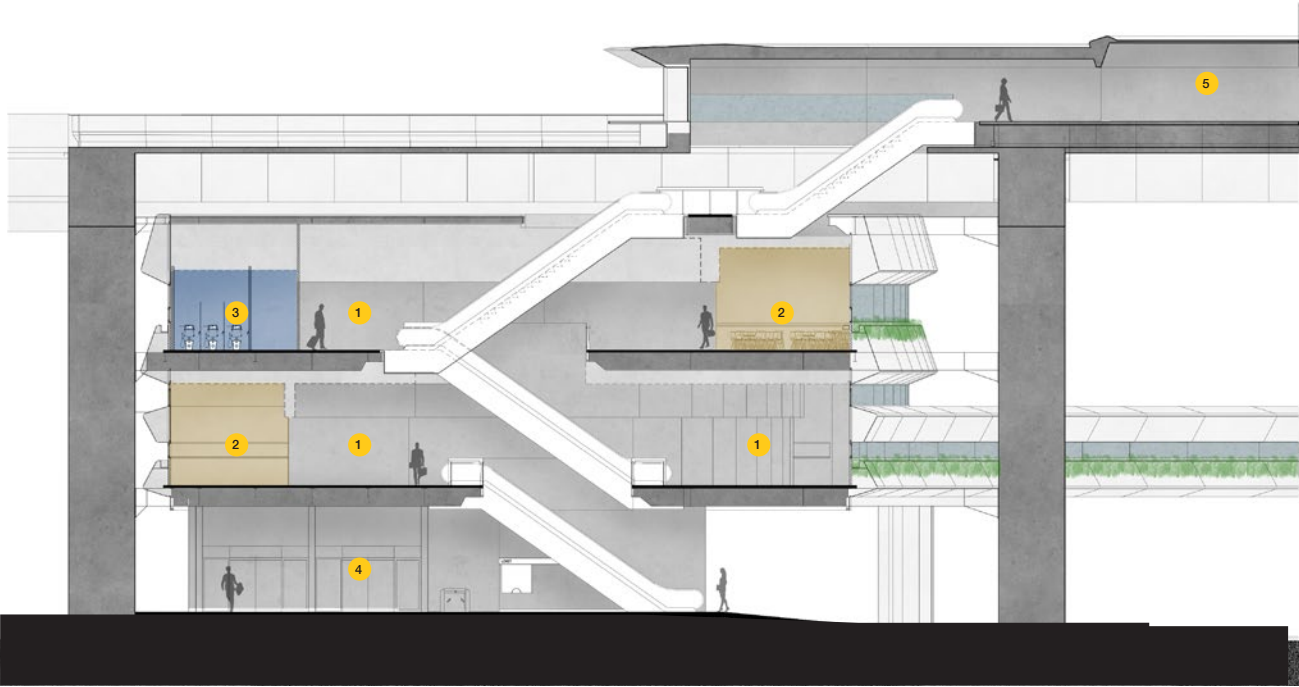








Section



Legend

- 1. Circulation
- 2. Retail
- 3. Toilet
- 4. CSW 1 Shelter
- 5. CSW 2 Shelter

Construction Documentation





















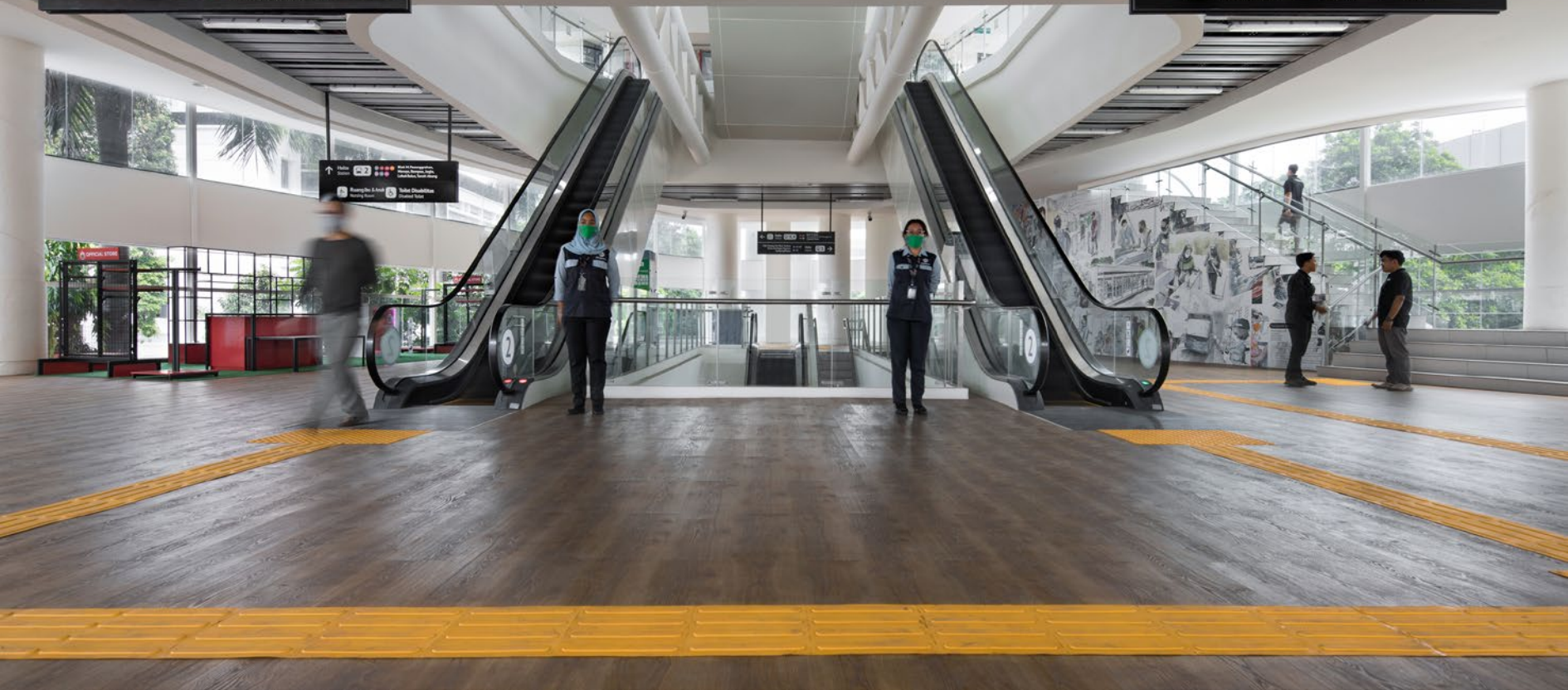
↑ Halte Station 1
CBD Ciledug, Puri Beta, Tendea
Tosari, Kuningan, Ragunan,
Kampung Melayu

↖ Halte Station 2
Blok M, Pesanggrahan,
Meruya, Rimpas, Joglo,
Lebak Bulus, Tanah Abang

Icons: 1, 2, 3, 4, 5, 6, 7, 8, 9, 10, 11, 12, 13, 14, 15, 16, 17, 18, 19, 20, 21, 22, 23, 24, 25, 26, 27, 28, 29, 30, 31, 32, 33, 34, 35, 36, 37, 38, 39, 40, 41, 42, 43, 44, 45, 46, 47, 48, 49, 50, 51, 52, 53, 54, 55, 56, 57, 58, 59, 60, 61, 62, 63, 64, 65, 66, 67, 68, 69, 70, 71, 72, 73, 74, 75, 76, 77, 78, 79, 80, 81, 82, 83, 84, 85, 86, 87, 88, 89, 90, 91, 92, 93, 94, 95, 96, 97, 98, 99, 100

↑ Halte Station 1
CBD Ciledug, Puri Beta, Tendea
Tosari, Kuningan, Ragunan,
Kampung Melayu

Musala Prayer Room
Toilet Toilet
ATM ATM





#INTEGRASI

3

3





thank you

PT Rekatama Konstruksindo